



Castlereagh Macquarie County Council

ANNUAL REPORT

2016/17

www.cmcc.nsw.gov.au



Disclaimer and Copyright

The information contained in this Annual Report including opinions, advice and representations ('the Content') has been formulated in good faith and with all due care, and is considered true and accurate at the time of publication. Castlereagh Macquarie County Council does not warrant or represent that the Content is free from errors or omissions or that it is exhaustive. Council does not accept any liability in relation to the quality or accuracy of the Content.

Council, its respective servants and agents accept no responsibility for any person acting on, or relying on, or upon the Content. To the extent permitted by law Council disclaims all liability for any loss, damage, cost or expense incurred or arising by reason of any person of any person using or relying on the Content or by reason or by any error, omission, defect or mis-statement (whether such error, omission or mis-statement is caused by or arises from negligence, lack of care or otherwise). Users of this Annual Report are reminded of the need to ensure that all information upon which they rely is up to date. Clarification regarding the currency of the Content can be obtained from Council.

You are permitted to copy, distribute, display and otherwise freely deal with the Content for any purpose, on the condition that you acknowledge Castlereagh Macquarie County Council as the source of the Content and attach the following statement to all uses of the Content © Castlereagh Macquarie County Council 2016. If you are seeking to use any Content for a commercial purpose, you must obtain permission from Council to do so.

This Annual Report is available electronically online at Castlereagh Macquarie County Council's website at: www.cmcc.nsw.gov.au
© Castlereagh Macquarie County Council

Table of Contents

Contact Details.....	4
A MESSAGE FROM THE CHAIRPERSON.....	5
OUR VISION AND MISSION STATEMENT	6
Vision	6
Mission.....	6
REASON FOR OUR ANNUAL REPORT	7
WHO WE ARE.....	8
Elected Council	8
The Administration	8
Location	8
Core Business Activities	8
OUR AREA OF OPERATION.....	10
OUR COUNCILLORS.....	11
OUR ORGANISATIONAL STRUCTURE	13
Current Organisational Structure	13
COUNTY COUNCIL'S ROLE IN WEED CONTROL.....	14
INTEGRATED PLANNING AND REPORTING SUMMARY	15
Business Activity Strategic Plan	15
Four Year Delivery Programme	15
Annual Operational Plan and Budget	15
INTRODUCTION OF THE NSW BIOSECURITY ACT 2015	16
WEEDS ACTION PROGRAM 2015-2020	18
COMMUNITY AWARENESS	19
HUDSON PEAR PROGRAMMES.....	20
PRIORITY WEEDS FOR CENTRAL WEST REGION	21
PRIORITY WEEDS FOR NORTH WEST REGION	45
COUNCIL'S SUMMARY OF ANNUAL OPERATIONS RESULTS AND AUDIT REPORT	74
SCHEDULE A – INDEPENDENT AUDITORS REPORT	75
SCHEDULE B – FINANCIAL STATEMENTS	76

Contact Details

Castlereagh Macquarie County Council

77 Fox Street
WALGETT NSW 2832

Postal Address:

PO Box 664
WALGETT NSW 2832

**Please address all correspondence to the General Manager.*

Telephone: (02) 6828 1399

Facsimile: (02) 6828 1608

Office Hours

8:30am to 4:30pm weekdays

Chairperson:

Clr Doug Batten

General Manager:

Mr Don Ramsland

Email:

admin@walgett.nsw.gov.au

Website:

www.cmcc.nsw.gov.au

A MESSAGE FROM THE CHAIRPERSON



As a single purpose Council, Castlereagh Macquarie County Council has successfully met the requirements of our five constituent Councils in the enforcement of control of noxious plants on private lands and the control of these plants on Council road reserves and lands.

This has been achieved within a changing environment due in a large part to the implantation of the NSW Biosecurity Act. This has necessitated significant changes within the organisation in regard to the introduction of digital technology and significant upskilling and training of our Weeds Officers. To this end I would like to acknowledge our staff, and in particular our retiring Senior Weeds

Officer, Mr John Unwin in the manner in which they have accepted and embraced the necessary changes.

The continued uncertainty surrounding the regulatory role of our Weeds Officers continues to be of concern, however we are working closely with our respective Local Land Services Boards, both North West and Central West, in seeking resolution of these issues.

A renewed commitment from all parties has seen a reinvigoration of the Hudson Pear Taskforce at Lightning Ridge. Under the Chairmanship of Mr Geoff Wise and with considerable support of staff of the North West Local Land Services a coordinated direction is emerging which will better enable the ongoing threat of Hudson Pear to the biosecurity of North Western NSW to be effectively contained.

Our financial reports confirm our ability to continue to operate sustainably and through the efforts of our six fulltime staff and part time General Manager the County Council is well placed to meet its obligations to its constituent Councils into the future.

OUR VISION AND MISSION STATEMENT

Vision

To prevent, contain or reduce the invasion of Noxious Plants within the County.

Mission

To provide effective integrated weed management systems utilising the latest technology to all Constituent Councils fairly and equitably in accordance with the ***NSW Biosecurity Act 2015***.

DRAFT

REASON FOR OUR ANNUAL REPORT

Our Annual Report is one of the key points of accountability between Council and our community. It is not a report that is submitted to the Office of Local Government or the State Government; rather it is a report to inform and update our community.

This report focuses on Council's implementation of the CMCC Delivery Programme 2017/2018 – 2020/2021 and Operational Programme 2017/2018. The CMCC Financial Statements for 2016/2017 and Audit Report are included in this report at ***Schedule B – Financial Statements***.

This report also includes some information that is prescribed by the Local Government (General) Regulation 2005. This information has been included in the Regulation because we believe that it is important for the community members to obtain knowledge about it – to help them gain a better understanding of how the Council has been performing both as a business entity and a community leader.

Below is the additional legislative basis for the development of our Annual Report:

LOCAL GOVERNMENT ACT 1993

The following is a summary of the requirements of Section 428 of the Act:

- Council must prepare an annual report within five months after the end of a financial year. The report will outline the Council's achievements in implementing its Delivery Program and the effectiveness of the principle activities undertaken in achieving the objectives at which those principle activities are directed.
- The annual report must contain Council's audited financial statements and notes and any information required by the Regulation or the Guidelines.
- A copy of the report must be posted on Council's website (www.cmcc.nsw.gov.au) and provided to the Minister and such other persons and bodies as the regulations may require.

LOCAL GOVERNMENT (GENERAL) REGULATION 2005

Clause 217 of the Regulation requires the following information to be included in the annual report:

- Details (including the purpose) of overseas visits during the year by Councillors and staff
- Details of Chairman and Councillor fees, expenses and facilities
- Details of contracts awarded by the Council
- Amounts incurred in relation to legal proceedings
- Works carried out on private lands and financial assistance
- Details of external bodies, companies and partnerships
- A statement of the activities undertaken by the council during that year to implement its equal employment opportunity management plan
- Details of the General Manager's total remuneration
- Details of the total remuneration of all senior staff members employed during the year

WHO WE ARE

The Castlereagh Macquarie County Council is comprised of two distinct parts: the governing body and the administration.

Elected Council

As a County Council under the LGA 1993, CMCC is required to have a governing body made up of elected representatives of its Constituent Councils. Part 5 of the Local Government Act 1993 (*see note 1) outlines the formation and operation of County Councils. The application of LGA 1993 to CMCC is outlined in Section 400, LGA 1993.

Ten councillors including a Chairperson and Deputy Chairperson make up the governing body of Castlereagh Macquarie County Council. Each Constituent Council is represented by two councillors who are elected as representatives for a four year term.

Under the *Local Government Act 1993*, Councillors have a responsibility to:

- Participate in the determination of the budget
- Play a key role in the creation and review of Council policies, objectives and criteria relating to the regulatory functions, and
- Review Council's performance and the delivery of services management plans and revenue policies.

A councillor represents residents and ratepayers, provides leadership and guidance to the community, and facilitates communication between the community and Council. Council formerly would meet bi-monthly (even months) on the third Monday of each month commencing at 10:00am. However at the June 2017 meeting Council resolved to continue to meet in June and August and meet in November rather than both October and December and also meet in March.

The Administration

The administration is organised into two groups, each with a range of responsibilities and is located at CMCC's Head Office in Walgett.

The General Manager leads the administrative arm of Castlereagh Macquarie County Council and is responsible for the efficient and effective operation of the business and ensuring that the decisions of Council are implemented.

The General Manager reports to the fully elected Council.

Location

Castlereagh Macquarie County Council is a single purpose Council which is responsible for the fulfillment of its Constituent Councils obligations under the NSW Biosecurity Act 2015.

The County Councils governance is in accordance with the Local Government Act 1993 (LGA 1993) with the County Council being first proclaimed in 1947.

The present area of operation of CMCC is the local government areas of Coonamble, Gilgandra, Warren, Walgett and Warrumbungle. These Councils are located in the Orana Region of Western New South Wales.

***Note 1:** Part 5, Local Government Act 1993 contained in Appendix A

Core Business Activities

The core role of the County Council is the prevention, elimination, minimisation and management of the biosecurity risk posed or likely to be posed by weeds on both private and council controlled lands.

The diverse range of climatic conditions within the region exposes it to a large range of invasive plants which have the potential of establishing themselves within the region.

In NSW all plants are regulated with a general biosecurity duty to prevent, eliminate or minimise

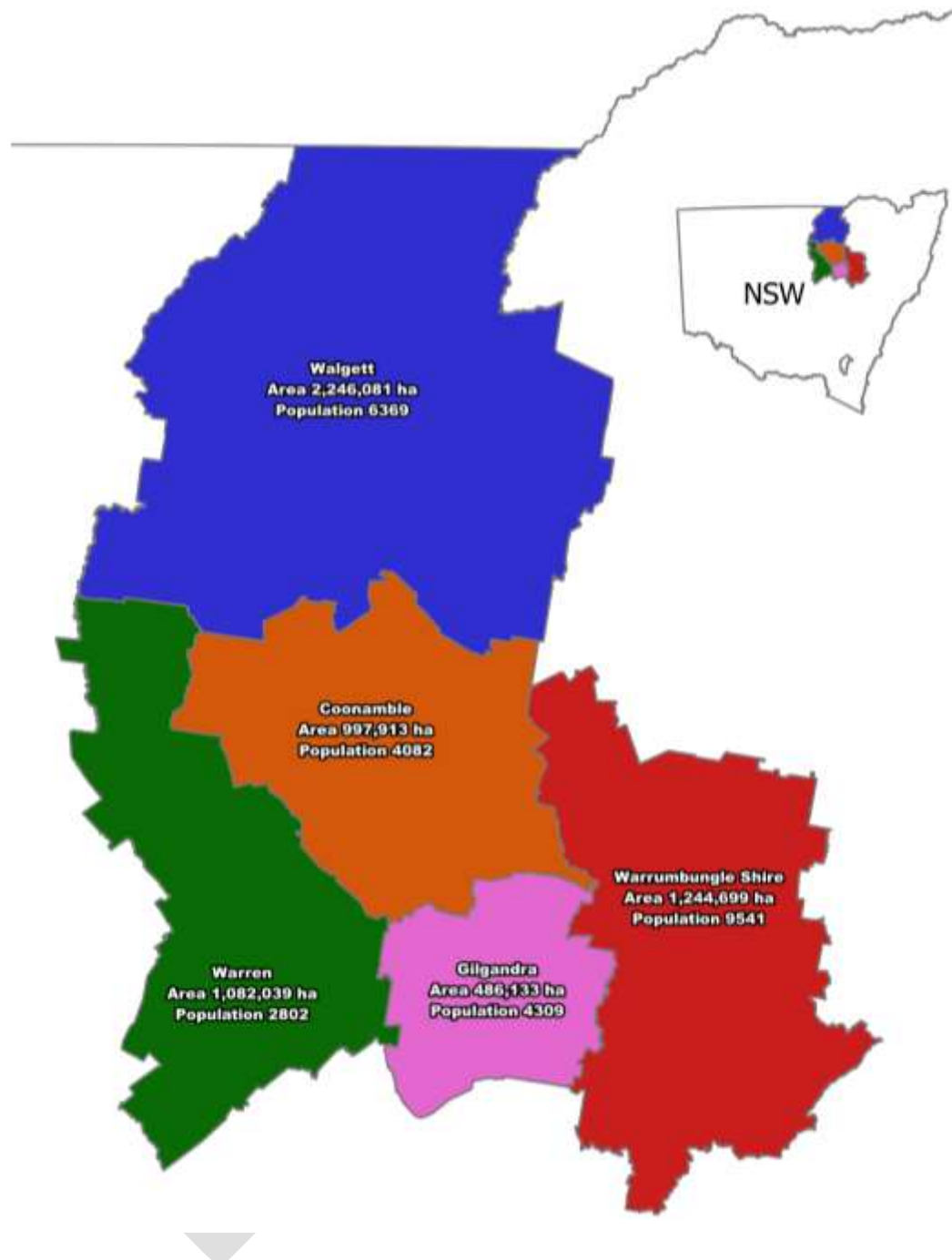
any biosecurity risk they may pose. Any person who deals with any plant, who knows (or ought to know) of any biosecurity risk, has a duty to ensure the risk is prevented, eliminated or minimized.

Government Grants

Council receives very limited Federal Government Grant Funding. However approximately one half of Council's income is sourced from State Government Grants which are administered by the Macquarie Valley Weeds Advisory Committee with Orange City Council being the lead agency. Various other grants are accessed through NSW Department of Primary Industries and other government agencies.

DRAFT

OUR AREA OF OPERATION



Castlereagh Macquarie County Council's area of operation comprises an area of approximately 6,056,865 hectares with a population of around 27,000 people. The region has a diverse topographical range, from the Warrumbungle Range to the semi-arid regions of Lightning Ridge and contains an extensive area of National Parks and Nature Reserves.

OUR COUNCILLORS

DON RAMSLAND



02 6828 1399
dramslan@walgett.nsw.gov.au

CR MARK BEACH



0427 335 400
council@warren.nsw.gov.au

CR ANDREW BREWER



02 6847 3166 (W)
council@warren.nsw.gov.au

CR DOUG BATTEN



02 6847 2057
mayor@gilgandra.nsw.gov.au

CR GREG PEART



0429 485 885
cr.gpeart@gilgandra.nsw.gov.au

CR MANUEL MARTINEZ



0429 492 009
mmartinez@live.com.au

CR IAN WOODCOCK



0417 257 558
woody@wj.com.au

CR MICHAEL WEBB



0427 905 626
thawebbs@hotmail.com

CR BILL FISHER



0427 235 818
coorawong@esat.net.au

CR PETER SHINTON



02 6842 2055
Peter.Shinton@warrumbungle.nsw.gov.au

CR RAY LEWIS



0427 460 376
Ray.Lewis@warrumbungle.nsw.gov.au

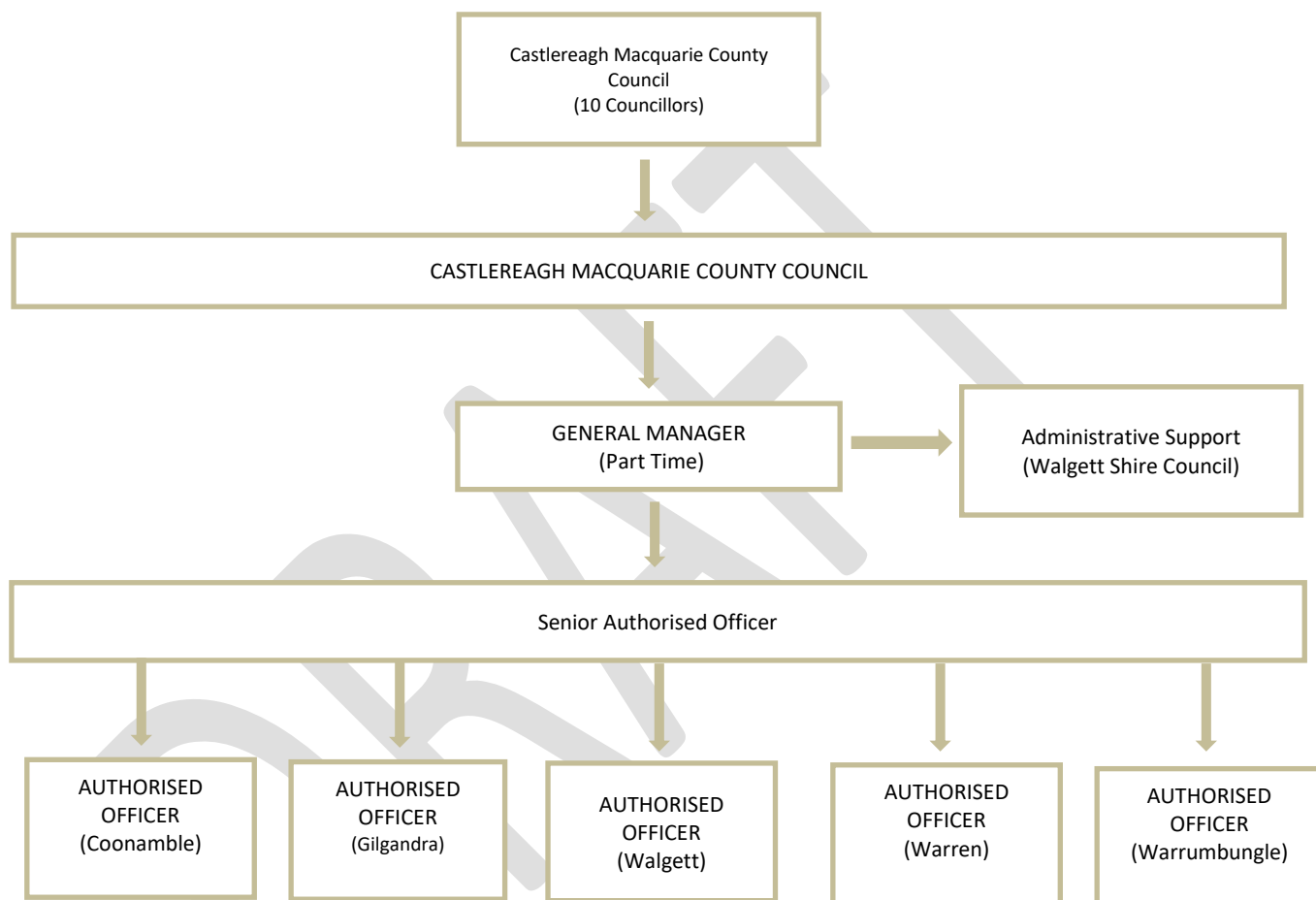
DRAFT

OUR ORGANISATIONAL STRUCTURE

The current staff structure of the Council consists of a part time General Manager/Accountant, a Senior Authorised Officer, Five District Authorised Officers with administrative support provided on a contract basis by Walgett Shire Council.

The Council's current structure is outlined in the following table. Council resolved that its governance and organisational structure be reduced to six permanent staff through natural attrition in 2013-2014.

Current Organisational Structure



General Manager:

This position is part time and currently held by the General Manager of Walgett Shire Council Don Ramsland. The General Manager is responsible for the management of CMCC in accordance with the **LGA 1993**.

Senior Authorised Officer:

This position is a full time position with the Senior Authorised Officer being responsible for the day to day management of CMCC and supervision of District Authorised Officers. The position is based at our Coonabarabran Depot.

Authorised Officers:

These positions are on a full time/casual/contract basis with duties including but not limited to property inspections for the presence of noxious plants on private lands and Council controlled lands, raising community awareness through public awareness programs in their designated Shires.

COUNTY COUNCIL'S ROLE IN WEED CONTROL

The County Council is constituted under the Local Government Act 1993 and is specified as a Local Control Authority under the NSW Biosecurity Act 2015. It is a special (single) purpose authority formed to carry out the following functions, in relation to the land for which it is the local control authority.

- the prevention, elimination, minimisation and management of the biosecurity risk posed or likely to be posed by weeds,
- to develop, implement, co-ordinate and review weed control programs,
- to inspect land in connection with its weed control functions,
- to keep records about the exercise of the local control authority's functions under this Act,
- to report to the Secretary about the exercise of the local control authority's functions under this Act.

DRAFT

INTEGRATED PLANNING AND REPORTING SUMMARY

Business Activity Strategic Plan

Council's Business Activity Strategic Plan (Plan) identifies Council's interpretation of its community's main priorities and aspirations for the future, addressing strategies for achieving the objectives in relation to invasive weeds management and control across our constituent council areas. This enables Council to improve agricultural sustainability, primary industry productivity and to deliver broad environmental outcomes for the County area for over the next ten years.

Council, as a small single purpose organisation has been mindful of its resource capacity and continues to act prudently to deliver the outcomes identified in its Plan.

The Plan is the foundation for the Annual Operational Plan and Budget, Four Year Delivery Programme and Resourcing Strategy comprising the Ten Year Financial Plan, Workforce Strategy and Asset Management Plan.

Four Year Delivery Programme

The Four Year Delivery Programme is a living, breathing document through which Council addresses the dynamic nature of invasive weed species and its constantly evolving approach to weed management and control.

It is Council's aim to continue to improve the services it provides to the Constituent Council communities through the strategic objectives and principle activities identified in the Programme in a range of ways including effective governance, strategic planning, environmental management and economic sustainability.

Annual Operational Plan and Budget

The Annual Operational Plan and Budget provides the framework for Council's day to day operations and the ability to have funding available for them.

Key aspects include the undertaking of activities in relation to the Weeds Action Plan, private property inspections and routine administrative functions and staff supervision. Most identified targets in the Delivery Programme and Operational Plan were met.

INTRODUCTION OF THE NSW BIOSECURITY ACT 2015

The NSW Biosecurity Act 2015 has repealed the Noxious Weeds Act 1993 and came into effect on 1 July 2017, which has provided regulatory controls and powers to manage noxious weeds in NSW.

The NSW Biosecurity Act 2015 streamlines and modernises the way weeds are managed in NSW as it:

- embeds the principle of shared responsibility for biosecurity risks (including weeds) across government, community and industry
- applies equally to all land in the state, regardless of whether it is publicly or privately owned
- is premised on the concept of risk, so that weed management investment and response is appropriate to the risk
- supports regional planning and management for weeds, as recommended by the Review of Weeds

Management in NSW.

Local Control Authorities (LCAs) play a key role in the collection of weed management information that can be used for planning at the regional, state and national scale. This requirement is recognised in the NSW Biosecurity Act and is a key deliverable of the NSW Weeds Action Program.

The DPI worked closely with Local Government to finalise the capability to upload local weed information to the NSW Biosecurity Information System (BIS). To date the system has been tested with five LCAs across NSW. This data, coupled with information provided by other land managers is critical to support decision making about enforcement activities and prioritising future investment.

A key part of this process was the establishment of the NSW Weeds Metadata Standard which is an agreed standard for the collection of weed data across NSW. Data submitted using this standard will be captured in BIS and be used to prepare a variety of reports. These reports will ensure each stakeholder has access to coordinated mapping information for weed management undertaken in the regions and across the state.

Specifically, weed management data captured will be used to determine:

- Future NSW Weeds Action Program funding and resource allocation;
- Weed compliance standards across NSW; and
- Statutory plans for specific weeds under the Biosecurity Act.

The data specified in the NSW Weed Metadata Standard aligns to biosecurity activities such as inspections, compliance, extension and control activities. This provides managers with the ability to have a broad view of where we've been, what we've seen and what "we" (Government and landholders) are doing about weeds.

Council purchased the WeedMap Pro Biosecurity Information System and Algiz 10X handheld devices in July 2016. Initial training for Weeds Officers and Administrative Staff was conducted by Adnan Munir who works in the Iconyx Division of RapidMap Global Pty Ltd on Wednesday 12th and Thursday 13th October 2016. Weed Officers commenced plotting field data 1st February 2017.

Four of our weeds officers attended a comprehensive package of ELearning training developed by the DPI in Warren on the 9th and 10th May followed by a Face-to-face workshop held in Dubbo

on 17th May 2017. The training covered compliance procedures, appointment of authorised officers, implementation of Regional Strategic Weed Management Plans, guidance on new regulations and use of a range of the new compliance tools. Weed officers were required to complete this as the minimum requirement for appointment as an Authorised Officer under the Act.

DRAFT

WEEDS ACTION PROGRAM 2015-2020

The NSW Weeds Action Program 2015-2020 (WAP1520) follows, and builds on, the successful implementation of the NSW Weeds Action Program 2010-2015.

It is a NSW Government initiative to reduce the impact of weeds and is guided by the NSW Biosecurity Strategy 2013-2021 (the Biosecurity Strategy) and the NSW Invasive Species Plan 2015-2020 (the ISP).

During the 2013-14 review of weed management in NSW, the Natural Resources Commission investigated several issues of community concern resulting in eight key recommendations. The Government response to the review was endorsed by Cabinet in September 2014. Implementation of the recommendations will require changes to existing regional delivery models.

The key recommendation relevant to WAP1520 is: Recommendation 3: Ensure consistent and coordinated regional planning and local delivery:

3B - Replace the existing 14 regional weed advisory committees with 11 statutory regional weed committees comprising LCAs, public and private landholders, and community members as subcommittees to LLS, and aligned with LLS borders

3C - Provide a legislative basis for tasking the regional weed committees with developing regional plans and priorities for weeds and surveillance.

The NSW Government is committed to implementing this recommendation and has identified WAP1520 as a key driver to deliver these changes. The establishment of the new committees is a high priority as they will assist regional planning requirements under the NSW Biosecurity Act. CMCC crosses two LLS regions – North West and Central West. To reduce administrative duplication, the county is presently a partner only in the Central West WAP1520 project. Orange City Council is currently the lead agency for the CW WAP 1520 project, coordinated by Macquarie Valley Weeds Advisory Committee.

The WAP targets the highest risk weeds, including:

- Through inspections and monitoring the prevention of new weeds becoming established,
- Through monitoring and control eliminating or preventing the spread of new weeds,
- Through targeted control programmes the protection of significant natural assets (endangered ecological communities, wetlands and major waterways),
- By targeting the weeds workforce and community improving capacity through awareness and education.

The county, along with all WAP partners and additional stakeholders with interests in weed management, is also working with the newly established Regional Weed Committees for both the North West and Central West regions. The committees are currently working on new Regional Strategic Weed Management Plans for the region.

COMMUNITY AWARENESS

Education and awareness continues to be an integral part of Council's core business. The tasks of engaging the public, mentoring landholders in weed management, identifying weeds, providing property weed management plans and conducting weed control demonstrations provide far great value for the community. This includes but is not limited to attending agricultural shows, field days and environmental and community events in all of our member Council areas. Council contributed it's involvement across a number of field days in 2016/2017 including the Gilgandra Show, Walgett Show, Coonamble Show, Lightning Ridge Opal Festival, Walgett Bulldust to Bitumen Big Street Party and AgQuip in Gunnedah. In addition to this the County continued to facilitate further training for its staff in respect of the new Biosecurity Act.



From left to Right: John Unwin Former Senior Weeds Officer, Carl Molloy Coonamble Weeds Officer, Bruce Timmins Former Walgett Weeds Officer and Kevin Watling Gilgandra Weeds Officer

HUDSON PEAR PROGRAMMES

Castlereagh Macquarie County Council has continuously been involved in various ongoing programmes to prevent, eliminate and minimise Hudson Pear outbreaks on reserves in Lightning Ridge, in particular Cumborah and the Five Ways.

Hudson pear is an invasive cactus species of Mexican origin that has naturalised in a variety of habitats in north-western NSW. It seriously degrades invaded land and ecosystems and is continuing to spread.

Hudson pear was first detected in Australia in the Lightning Ridge area during the late 1960s. It is believed to have spread from a cactus nursery at Grawin. If left unchecked, it has the potential to reduce the viability of agricultural enterprises and subsequent land values and impact adversely on native fauna and flora. Its presence on flood plains in north-western NSW is particularly worrying as a major flood event could result in a significant increase in its distribution including movement into the Darling River system.



The county continue to raise awareness within the community around Hudson Pear and have been actively involved in the Hudson Pear Taskforce which had been in recess for a number of years. The Taskforce was re-established in 2015 and is still current to date with the next meeting to be held in November 2017. The Taskforce includes various stakeholders such as Castlereagh Macquarie County Council, Local Land Services, NSW Department of Primary Industries, Lightning Ridge Miners Association, The Grawin Glengarry Sheepyards Miners Association (GGSMA) as well as numerous landholders and community members.

In November 2016 the County attended a Public Meeting in Cumborah address concerns around Hudson Pear and provide updates on what the HPTF and Local Control Authorities are doing to control and prevent the spread of the weed. Our newly appointed Senior Authorised Officer attended an Opuntia Workshop in Lightning Ridge in April this year which included discussion around Biology/ecology, Identification, Detection/delimitation, Control (chemical, mechanical, biological), Integrated management, Health, safety and welfare, Mapping and general knowledge.

The County was also engaged by DPI – Lands to quote and carry out private works on various projects for Hudson Pear. Some of these works included; Spraying on Weetalibah and Rexeen Fire Trails, Cumborah and Lightning Ridge Treatment Areas.

PRIORITY WEEDS FOR CENTRAL WEST REGION

This region includes the local government areas of Coonamble, Gilgandra, Warren and Warrumbungles.

Weed	Duty
All plants	General Biosecurity Duty <i>All plants are regulated with a general biosecurity duty to prevent, eliminate or minimise any biosecurity risk they may pose. Any person who deals with any plant, who knows (or ought to know) of any biosecurity risk, has a duty to ensure the risk is prevented, eliminated or minimised, so far as is reasonably practicable.</i>
African boxthorn <i>Lycium ferocissimum</i>	Mandatory Measure <i>Must not be imported into the State or sold</i>
Alligator weed <i>Alternanthera philoxeroides</i>	Mandatory Measure <i>Must not be imported into the State or sold</i>
Alligator weed <i>Alternanthera philoxeroides</i>	Biosecurity Zone <p>The Alligator Weed Biosecurity Zone is established for all land within the state except land in the following regions: Greater Sydney; Hunter (but only in the local government areas of City of Lake Macquarie, City of Maitland, City of Newcastle or Port Stephens).</p> <p><i>Within the Biosecurity Zone this weed must be eradicated where practicable, or as much of the weed destroyed as practicable, and any remaining weed suppressed. The local control authority must be notified of any new infestations of this weed within the Biosecurity Zone</i></p>

Anchored water hyacinth
Eichhornia azurea

Prohibited Matter

A person who deals with prohibited matter or a carrier of prohibited matter is guilty of an offence. A person who becomes aware of or suspects the presence of prohibited matter must immediately notify the Department of Primary Industries

Arrowhead
Sagittaria calycina var. *calycina*

Regional Recommended Measure

Land managers should mitigate the risk of new weeds being introduced to their land. The plant should be eradicated from the land and the land kept free of the plant. The plant should not be bought, sold, grown, carried or released into the environment. Notify local control authority if found.

This Regional Recommended Measure applies to all species of *Sagittaria*

Athel pine
Tamarix aphylla

Mandatory Measure

Must not be imported into the State or sold

Athel pine
Tamarix aphylla

Regional Recommended Measure

Exclusion zone: all waterways and riparian areas in the region. Core infestation area: whole region except for the exclusion zone. Exclusion zone: The plant should be eradicated from the land and the land kept free of the plant. Land managers should mitigate the risk of the plant being introduced to their land. Core infestation area: Land managers should reduce impacts from the plant on priority assets. Land managers should mitigate the risk of the plant being introduced to their land.

Bellyache bush

Mandatory Measure

Jatropha gossypifolia

Must not be imported into the State or sold

Bitou bush

Chrysanthemoides monilifera subsp. *rotundata*

Mandatory Measure

Must not be imported into the State or sold

Bitou bush

Chrysanthemoides monilifera subsp. *rotundata*

Biosecurity Zone

The Bitou Bush Biosecurity Zone is established for all land within the State except land within 10 kilometres of the mean high water mark of the Pacific Ocean between Cape Byron in the north and Point Perpendicular in the south.

Within the Biosecurity Zone this weed must be eradicated where practicable, or as much of the weed destroyed as practicable, and any remaining weed suppressed. The local control authority must be notified of any new infestations of this weed within the Biosecurity Zone

Black knapweed

Centaurea X moncktonii

Prohibited Matter

A person who deals with prohibited matter or a carrier of prohibited matter is guilty of an offence. A person who becomes aware of or suspects the presence of prohibited matter must immediately notify the Department of Primary Industries

Black willow

Salix nigra

Mandatory Measure

Must not be imported into the State or sold

Blackberry

Rubus fruticosus species aggregate

Mandatory Measure

Must not be imported into the State or sold
All species in the *Rubus fruticosus* species aggregate have this requirement, except for the varietals

**Black Satin, Chehalem, Chester
Thornless, Dirksen Thornless, Loch
Ness, Murrindindi, Silvan, Smooth Stem,
and Thornfree**

Blue heliotrope

Heliotropium amplexicaule

Regional Recommended Measure

Exclusion zone: Weddin local government area. Core infestation area: whole region except for exclusion zone.

Whole region: The plant should not be bought, sold, grown, carried or released into the environment. Exclusion zone: The plant should be eradicated from the land and the land kept free of the plant. Land managers should mitigate the risk of the plant being introduced to their land. Core infestation area: Land managers should reduce impacts from the plant on priority assets. Land managers should mitigate the risk of the plant being introduced to their land.

Boneseed

Chrysanthemoides monilifera subsp. *monilifera*

Mandatory Measure

Must not be imported into the State or sold

Boneseed

Chrysanthemoides monilifera subsp. *monilifera*

Control Order

Boneseed Control Zone: Whole of NSW
Boneseed Control Zone (Whole of NSW): Owners and occupiers of land on which there is boneseed must notify the local control authority of new infestations; immediately destroy the plants; ensure subsequent generations are destroyed; and ensure the land is kept free of the plant. A person who deals with a carrier of boneseed must ensure the plant (and any seed and propagules) is not moved from the land; and immediately notify the local control authority of the presence of the plant.

Boxing glove cactus

Cylindropuntia fulgida var. *mamillata*

Mandatory Measure

Must not be imported into the State or sold

Boxing glove cactus

Cylindropuntia fulgida var. *mamillata*

Regional Recommended Measure

Land managers should mitigate the risk of new weeds being introduced to their land. Land managers should mitigate spread from their land.

This Regional Recommended Measure applies to all species of *Cylindropuntia* except *Cylindropuntia rosea* (Hudson pear)

Bridal creeper

Asparagus asparagoides

Mandatory Measure

Must not be imported into the State or sold
***this requirement also applies to the Western Cape form of bridal creeper**

Bridal creeper

Asparagus asparagoides

Regional Recommended Measure

Land managers should mitigate the risk of new weeds being introduced to their land. Land managers should mitigate spread from their land.

Bridal veil creeper

Asparagus declinatus

Prohibited Matter

A person who deals with prohibited matter or a carrier of prohibited matter is guilty of an offence. A person who becomes aware of or suspects the presence of prohibited matter must immediately notify the Department of Primary Industries

Broomrapes

Orobanche species

Prohibited Matter

A person who deals with prohibited matter or a carrier of prohibited matter is guilty of

an offence. A person who becomes aware of or suspects the presence of prohibited matter must immediately notify the Department of Primary Industries

All species of *Orobanche* are Prohibited Matter in NSW, except the natives *Orobanche cernua* var. *australiana* and *Orobanche minor*

Burr ragweed
Ambrosia confertiflora

Regional Recommended Measure
Land managers should mitigate the risk of new weeds being introduced to their land. The plant should be eradicated from the land and the land kept free of the plant. The plant should not be bought, sold, grown, carried or released into the environment.

Cabomba
Cabomba caroliniana

Mandatory Measure
Must not be imported into the State or sold

Cane cactus
Austrocylindropuntia cylindrica

Mandatory Measure
Must not be imported into the State or sold
All species in the *Austrocylindropuntia* genus have this requirement

Cape broom
Genista monspessulana

Mandatory Measure
Must not be imported into the State or sold

Carrion flower
Orbea variegata

Regional Recommended Measure
Land managers should mitigate the risk of new weeds being introduced to their land. The plant should be eradicated from the land and the land kept free of the plant. The plant should not be bought, sold, grown,

carried or released into the environment.

Cat's claw creeper
Dolichandra unguis-cati

Mandatory Measure

Must not be imported into the State or sold

Cat's claw creeper
Dolichandra unguis-cati

Regional Recommended Measure

Land managers should mitigate the risk of new weeds being introduced to their land. Land managers should mitigate spread from their land.

Chilean needle grass
Nassella neesiana

Mandatory Measure

Must not be imported into the State or sold

Chilean needle grass
Nassella neesiana

Regional Recommended Measure

Land managers should mitigate the risk of new weeds being introduced to their land. The plant should be eradicated from the land and the land kept free of the plant. The plant should not be bought, sold, grown, carried or released into the environment. Notify local control authority if found.

Climbing asparagus
Asparagus africanus

Mandatory Measure

Must not be imported into the State or sold

Climbing asparagus fern
Asparagus plumosus

Mandatory Measure

Must not be imported into the State or sold

Common pear

Mandatory Measure

Opuntia stricta

Must not be imported into the State or sold

Common pear
Opuntia stricta

Regional Recommended Measure

Whole region: Land managers should mitigate the risk of new weeds being introduced to their land. Core infestations: Land managers should mitigate spread from their land.

***This Regional Recommended Measure applies to all species of *Opuntia* except for *Opuntia ficus-indica* (Indian fig)**

Coolatai grass
Hyparrhenia hirta

Regional Recommended Measure

Exclusion zone: whole region except for the core infestation area of the Warrumbungle and Coonamble Shire Council areas
Whole region: The plant should not be bought, sold, grown, carried or released into the environment. Exclusion zone: The plant should be eradicated from the land and the land kept free of the plant. Land managers should mitigate the risk of the plant being introduced to their land. Core infestation area: Land managers should reduce impacts from the plant on priority assets. Land managers should mitigate the risk of the plant being introduced to their land.

East Indian hygrophila
Hygrophila polysperma

Regional Recommended Measure

Land managers should mitigate the risk of new weeds being introduced to their land. The plant should be eradicated from the land and the land kept free of the plant. The plant should not be bought, sold, grown, carried or released into the environment. Notify local control authority if found.

Eurasian water milfoil

Prohibited Matter

Myriophyllum spicatum

A person who deals with prohibited matter or a carrier of prohibited matter is guilty of an offence. A person who becomes aware of or suspects the presence of prohibited matter must immediately notify the Department of Primary Industries

Fireweed

Senecio madagascariensis

Mandatory Measure

Must not be imported into the State or sold

Fireweed

Senecio madagascariensis

Regional Recommended Measure

Land managers should mitigate the risk of the plant being introduced to their land. The plant should be eradicated from the land and the land kept free of the plant.

Flax-leaf broom

Genista linifolia

Mandatory Measure

Must not be imported into the State or sold

Frogbit

Limnobium laevigatum

Prohibited Matter

A person who deals with prohibited matter or a carrier of prohibited matter is guilty of an offence. A person who becomes aware of or suspects the presence of prohibited matter must immediately notify the Department of Primary Industries

All species of *Limnobium* are Prohibited Matter

Gamba grass

Andropogon gayanus

Prohibited Matter

A person who deals with prohibited matter or a carrier of prohibited matter is guilty of an offence. A person who becomes aware of or suspects the presence of prohibited matter must immediately notify the

Giant reed

Arundo donax

Regional Recommended Measure

Land managers should mitigate the risk of new weeds being introduced to their land. Land managers should mitigate spread from their land. The plant should not be bought, sold, grown, carried or released into the environment.

Gorse

Ulex europaeus

Mandatory Measure

Must not be imported into the State or sold

Grey willow

Salix cinerea

Mandatory Measure

Must not be imported into the State or sold

Ground asparagus

Asparagus aethiopicus

Mandatory Measure

Must not be imported into the State or sold

Harrisia cactus

Harrisia species

Regional Recommended Measure

Land managers should mitigate the risk of new weeds being introduced to their land. The plant should be eradicated from the land and the land kept free of the plant. The plant should not be bought, sold, grown, carried or released into the environment.

Hawkweeds

Hieracium species

Prohibited Matter

A person who deals with prohibited matter or a carrier of prohibited matter is guilty of an offence. A person who becomes aware of or suspects the presence of prohibited matter must immediately notify the

Department of Primary Industries
All species in the genus *Hieracium* are Prohibited Matter

[Honey locust](#)
Gleditsia triacanthos

Regional Recommended Measure
Land managers should mitigate the risk of new weeds being introduced to their land. Land managers should mitigate spread from their land. The plant should not be bought, sold, grown, carried or released into the environment.

[Hudson pear](#)
Cylindropuntia rosea

Mandatory Measure
Must not be imported into the State or sold

[Hudson pear](#)
Cylindropuntia rosea

Regional Recommended Measure
Land managers should mitigate the risk of the plant being introduced to their land. The plant should be eradicated from the land and the land kept free of the plant.

[Hydrocotyl](#)
Hydrocotyle ranunculoides

Prohibited Matter
A person who deals with prohibited matter or a carrier of prohibited matter is guilty of an offence. A person who becomes aware of or suspects the presence of prohibited matter must immediately notify the Department of Primary Industries

[Hygrophila](#)
Hygrophila costata

Regional Recommended Measure
Land managers should mitigate the risk of new weeds being introduced to their land. The plant should be eradicated from the land and the land kept free of the plant. The plant should not be bought, sold, grown, carried or released into the environment.

Notify local control authority if found.

Hymenachne

Hymenachne amplexicaulis and hybrids

Mandatory Measure

Must not be imported into the State or sold

Hymenachne

Hymenachne amplexicaulis and hybrids

Regional Recommended Measure

Land managers should mitigate the risk of new weeds being introduced to their land. The plant should be eradicated from the land and the land kept free of the plant. The plant should not be bought, sold, grown, carried or released into the environment. Notify local control authority if found.

Johnson grass

Sorghum halepense

Regional Recommended Measure

Land managers should mitigate the risk of new weeds being introduced to their land. Land managers should mitigate spread from their land. The plant should not be bought, sold, grown, carried or released into the environment.

Karoo thorn

Vachellia karroo

Prohibited Matter

A person who deals with prohibited matter or a carrier of prohibited matter is guilty of an offence. A person who becomes aware of or suspects the presence of prohibited matter must immediately notify the Department of Primary Industries

Kidney-leaf mud plantain

Heteranthera reniformis

Regional Recommended Measure

Land managers should mitigate the risk of new weeds being introduced to their land. The plant should be eradicated from the land and the land kept free of the plant. The plant should not be bought, sold, grown,

carried or released into the environment.
Notify local control authority if found.

Kochia

Bassia scoparia

Prohibited Matter

A person who deals with prohibited matter or a carrier of prohibited matter is guilty of an offence. A person who becomes aware of or suspects the presence of prohibited matter must immediately notify the Department of Primary Industries
Excluding the subspecies *trichophylla*

Koster's curse

Clidemia hirta

Prohibited Matter

A person who deals with prohibited matter or a carrier of prohibited matter is guilty of an offence. A person who becomes aware of or suspects the presence of prohibited matter must immediately notify the Department of Primary Industries

Lagarosiphon

Lagarosiphon major

Prohibited Matter

A person who deals with prohibited matter or a carrier of prohibited matter is guilty of an offence. A person who becomes aware of or suspects the presence of prohibited matter must immediately notify the Department of Primary Industries

Lantana

Lantana camara

Mandatory Measure

Must not be imported into the State or sold

Long-leaf willow primrose

Ludwigia longifolia

Regional Recommended Measure

Land managers should mitigate the risk of new weeds being introduced to their land. The plant should be eradicated from the land and the land kept free of the plant. The

plant should not be bought, sold, grown, carried or released into the environment. Notify local control authority if found.

Ludwigia

Ludwigia peruviana

Regional Recommended Measure

Land managers should mitigate the risk of new weeds being introduced to their land. The plant should be eradicated from the land and the land kept free of the plant. The plant should not be bought, sold, grown, carried or released into the environment. Notify local control authority if found.

Madeira vine

Anredera cordifolia

Mandatory Measure

Must not be imported into the State or sold

Mesquite

Prosopis species

Mandatory Measure

Must not be imported into the State or sold
All species in the genus *Prosopis* have this requirement

Mesquite

Prosopis species

Regional Recommended Measure

Land managers should mitigate the risk of the plant being introduced to their land. The plant should be eradicated from the land and the land kept free of the plant.

Mexican feather grass

Nassella tenuissima

Prohibited Matter

A person who deals with prohibited matter or a carrier of prohibited matter is guilty of an offence. A person who becomes aware of or suspects the presence of prohibited matter must immediately notify the Department of Primary Industries

Miconia

Miconia species

Prohibited Matter

A person who deals with prohibited matter or a carrier of prohibited matter is guilty of an offence. A person who becomes aware of or suspects the presence of prohibited matter must immediately notify the Department of Primary Industries

All species of *Miconia* are Prohibited Matter in NSW

Mikania vine

Mikania micrantha

Prohibited Matter

A person who deals with prohibited matter or a carrier of prohibited matter is guilty of an offence. A person who becomes aware of or suspects the presence of prohibited matter must immediately notify the Department of Primary Industries

***all species in the genus *Mikania* are Prohibited Matter in NSW**

Mimosa

Mimosa pigra

Prohibited Matter

A person who deals with prohibited matter or a carrier of prohibited matter is guilty of an offence. A person who becomes aware of or suspects the presence of prohibited matter must immediately notify the Department of Primary Industries

Mother-of-millions

Bryophyllum species

Regional Recommended Measure

Land managers should mitigate the risk of new weeds being introduced to their land. Land managers should mitigate spread from their land. The plant should not be bought, sold, grown, carried or released into the environment.

Parkinsonia

Mandatory Measure

Parkinsonia aculeata

Must not be imported into the State or sold

Parkinsonia

Parkinsonia aculeata

Control Order

Parkinsonia Control Zone: Whole of NSW
Parkinsonia Control Zone (Whole of NSW): Owners and occupiers of land on which there is parkinsonia must notify the local control authority of new infestations; immediately destroy the plants; ensure subsequent generations are destroyed; and ensure the land is kept free of the plant. A person who deals with a carrier of parkinsonia must ensure the plant (and any seed and propagules) is not moved from the land; and immediately notify the local control authority of the presence of the plant.

Parthenium weed

Parthenium hysterophorus

Prohibited Matter

A person who deals with prohibited matter or a carrier of prohibited matter is guilty of an offence. A person who becomes aware of or suspects the presence of prohibited matter must immediately notify the Department of Primary Industries

Parthenium weed

Parthenium hysterophorus

Mandatory Measure

The following equipment must not be imported into NSW from Queensland: grain harvesters (including the comb or front), comb trailers (including the comb or front), bins used for holding grain during harvest operations, augers or similar for moving grain, vehicles used to transport grain harvesters, support vehicles driven in paddocks during harvest operations, mineral exploration drilling rigs and vehicles used to transport those rigs, unless set out as an exception in Division 5, Part 2 of the Biosecurity Order (Permitted Activities)

Pond apple

Annona glabra

Prohibited Matter

A person who deals with prohibited matter or a carrier of prohibited matter is guilty of an offence. A person who becomes aware of or suspects the presence of prohibited matter must immediately notify the Department of Primary Industries

Prickly acacia

Vachellia nilotica

Prohibited Matter

A person who deals with prohibited matter or a carrier of prohibited matter is guilty of an offence. A person who becomes aware of or suspects the presence of prohibited matter must immediately notify the Department of Primary Industries

Prickly pears - Austrocyllindropuntias

Austrocyllindropuntia species

Mandatory Measure

Must not be imported into the State or sold
All species in the *Austrocyllindropuntia* genus have this requirement

Prickly pears - Cyllindropuntias

Cyllindropuntia species

Mandatory Measure

Must not be imported into the State or sold
All species in the *Cyllindropuntia* genus have this requirement

Prickly pears - Cyllindropuntias

Cyllindropuntia species

Regional Recommended Measure

Land managers should mitigate the risk of new weeds being introduced to their land. Land managers should mitigate spread from their land.

This Regional Recommended Measure applies to all species

of *Cylindropuntia* except *Cylindropuntia rosea* (Hudson pear)

Prickly pears - Opuntias
Opuntia species

Mandatory Measure

Must not be imported into the State or sold
Except for *Opuntia ficus-indica* (Indian fig)

Prickly pears - Opuntias
Opuntia species

Regional Recommended Measure

Land managers should mitigate the risk of new weeds being introduced to their land. Land managers should mitigate spread from their land.

This Regional Recommended Measure applies to all species of *Opuntia* except for *Opuntia ficus-indica* (Indian fig)

Rope pear
Cylindropuntia imbricata

Mandatory Measure

Must not be imported into the State or sold
All species in the *Cylindropuntia* genus have this requirement

Rope pear
Cylindropuntia imbricata

Regional Recommended Measure

Land managers should mitigate the risk of new weeds being introduced to their land. Land managers should mitigate spread from their land.

This Regional Recommended Measure applies to all species of *Cylindropuntia* except *Cylindropuntia rosea* (Hudson pear)

Rubber vine
Cryptostegia grandiflora

Prohibited Matter

A person who deals with prohibited matter or a carrier of prohibited matter is guilty of an offence. A person who becomes aware

of or suspects the presence of prohibited matter must immediately notify the Department of Primary Industries

Sagittaria

Sagittaria platyphylla

Mandatory Measure

Must not be imported into the State or sold

Sagittaria

Sagittaria platyphylla

Regional Recommended Measure

Land managers should mitigate the risk of new weeds being introduced to their land. The plant should be eradicated from the land and the land kept free of the plant. Notify local control authority if found.

This Regional Recommended Measure applies to all species of *Sagittaria*

Salvinia

Salvinia molesta

Mandatory Measure

Must not be imported into the State or sold

Salvinia

Salvinia molesta

Regional Recommended Measure

Land managers should mitigate the risk of new weeds being introduced to their land. The plant should be eradicated from the land and the land kept free of the plant. The plant should not be bought, sold, grown, carried or released into the environment. Notify local control authority if found.

Scotch broom

Cytisus scoparius subsp. *scoparius*

Mandatory Measure

Must not be imported into the State or sold

Serrated tussock

Mandatory Measure

Nassella trichotoma

Must not be imported into the State or sold

Serrated tussock

Nassella trichotoma

Regional Recommended Measure

Exclusion zone: whole region except for the core infestation area that is bounded by the Central West Local Land Services boundary north along Burrendong Way to Stuart Town, east along Mookerawa Road to Burrendong Dam, and east along Oak Creek, bounded by the Central West Local Land Services boundary

Exclusion zone: The plant should be eradicated from the land and the land kept free of the plant. Land managers should mitigate the risk of the plant being introduced to their land. Core infestation area: Land managers should reduce impacts from the plant on priority assets. Land managers should mitigate the risk of the plant being introduced to their land.

Siam weed

Chromolaena odorata

Prohibited Matter

A person who deals with prohibited matter or a carrier of prohibited matter is guilty of an offence. A person who becomes aware of or suspects the presence of prohibited matter must immediately notify the Department of Primary Industries

Silverleaf nightshade

Solanum elaeagnifolium

Mandatory Measure

Must not be imported into the State or sold

Silverleaf nightshade

Solanum elaeagnifolium

Regional Recommended Measure

Land managers should mitigate the risk of new weeds being introduced to their land. Land managers should mitigate spread from their land.

Smooth tree pear
Opuntia monacantha

Mandatory Measure

Must not be imported into the State or sold

Smooth tree pear
Opuntia monacantha

Regional Recommended Measure

Whole region: Land managers should mitigate the risk of new weeds being introduced to their land. Core infestations: Land managers should mitigate spread from their land.

***This Regional Recommended Measure applies to all species of *Opuntia* except for *Opuntia ficus-indica* (Indian fig)**

Snakefeather
Asparagus scandens

Mandatory Measure

Must not be imported into the State or sold

Spiny burrgrass - longispinus
Cenchrus longispinus

Regional Recommended Measure

Land managers should mitigate the risk of new weeds being introduced to their land. Land managers should mitigate spread from their land. The plant should not be bought, sold, grown, carried or released into the environment.

Spiny burrgrass - spinifex
Cenchrus spinifex

Regional Recommended Measure

Land managers should mitigate the risk of new weeds being introduced to their land. Land managers should mitigate spread from their land. The plant should not be bought, sold, grown, carried or released into the environment.

Spongeplant
Limnobia spongia

Prohibited Matter

A person who deals with prohibited matter or a carrier of prohibited matter is guilty of

an offence. A person who becomes aware of or suspects the presence of prohibited matter must immediately notify the Department of Primary Industries
All species of *Limnobium* are Prohibited Matter

Spotted knapweed

Centaurea stoebe subsp. *micranthos*

Prohibited Matter

A person who deals with prohibited matter or a carrier of prohibited matter is guilty of an offence. A person who becomes aware of or suspects the presence of prohibited matter must immediately notify the Department of Primary Industries

Tiger pear

Opuntia aurantiaca

Mandatory Measure

Must not be imported into the State or sold

Tiger pear

Opuntia aurantiaca

Regional Recommended Measure

Whole region: Land managers should mitigate the risk of new weeds being introduced to their land. Core infestations: Land managers should mitigate spread from their land.

***This Regional Recommended Measure applies to all species of *Opuntia* except for *Opuntia ficus-indica* (Indian fig)**

Tropical soda apple

Solanum viarum

Control Order

Tropical Soda Apple Control Zone: Whole of NSW

Tropical Soda Apple Control Zone (Whole of NSW): Owners and occupiers of land on which there is tropical soda apple must notify the local control authority of new infestations; destroy the plants including the fruit; ensure subsequent generations are destroyed; and ensure the land is kept free of the plant. A person who deals with a

carrier of tropical soda apple must ensure the plant (and any seed and propagules) is not moved from the land; and immediately notify the local control authority of the presence of the plant on the land, or on or in a carrier.

Velvety tree pear
Opuntia tomentosa

Mandatory Measure

Must not be imported into the State or sold

Velvety tree pear
Opuntia tomentosa

Regional Recommended Measure

Whole region: Land managers should mitigate the risk of new weeds being introduced to their land. Core infestations: Land managers should mitigate spread from their land.

This Regional Recommended Measure applies to all species of *Opuntia* except for *Opuntia ficus-indica* (Indian fig)

Water caltrop
Trapa species

Prohibited Matter

A person who deals with prohibited matter or a carrier of prohibited matter is guilty of an offence. A person who becomes aware of or suspects the presence of prohibited matter must immediately notify the Department of Primary Industries

All species in the *Trapa* genus are Prohibited Matter in NSW

Water hyacinth
Eichhornia crassipes

Mandatory Measure

Must not be imported into the State or sold

Water hyacinth

Biosecurity Zone

The Water Hyacinth Biosecurity Zone applies to all land within the State, except

Eichhornia crassipes

for the following regions: Greater Sydney or North Coast, North West (but only the local government area of Moree Plains), Hunter (but only in the local government areas of City of Cessnock, City of Lake Macquarie, MidCoast, City of Maitland, City of Newcastle or Port Stephens), South East (but only in the local government areas of Eurobodalla, Kiama, City of Shellharbour, City of Shoalhaven or City of Wollongong). *Within the Biosecurity Zone this weed must be eradicated where practicable, or as much of the weed destroyed as practicable, and any remaining weed suppressed. The local control authority must be notified of any new infestations of this weed within the Biosecurity Zone*

Water lilies
Nymphaea species

Regional Recommended Measure
Land managers should mitigate the risk of new weeds being introduced to their land. The plant should be eradicated from the land and the land kept free of the plant. The plant should not be bought, sold, grown, carried or released into the environment. Notify local control authority if found.

Water soldier
Stratiotes aloides

Prohibited Matter
A person who deals with prohibited matter or a carrier of prohibited matter is guilty of an offence. A person who becomes aware of or suspects the presence of prohibited matter must immediately notify the Department of Primary Industries

Willows
Salix species

Mandatory Measure
Must not be imported into the State or sold
All species in the *Salix* genus have this requirement, except *Salix babylonica* (weeping willows), *Salix x calodendron* (pussy willow) and *Salix x*

reichardtii (sterile pussy willow)

Witchweeds

Striga species

Prohibited Matter

A person who deals with prohibited matter or a carrier of prohibited matter is guilty of an offence. A person who becomes aware of or suspects the presence of prohibited matter must immediately notify the Department of Primary Industries

All species in the *Striga* genus are Prohibited Matter in NSW, except the native *Striga parviflora*

Yellow burrhead

Limnocharis flava

Prohibited Matter

A person who deals with prohibited matter or a carrier of prohibited matter is guilty of an offence. A person who becomes aware of or suspects the presence of prohibited matter must immediately notify the Department of Primary Industries

PRIORITY WEEDS FOR NORTH WEST REGION

This region includes the local government area of Walgett.

Weed	Duty
All plants	General Biosecurity Duty <i>All plants are regulated with a general biosecurity duty to prevent, eliminate or minimise any biosecurity risk they may</i>

pose. Any person who deals with any plant, who knows (or ought to know) of any biosecurity risk, has a duty to ensure the risk is prevented, eliminated or minimised, so far as is reasonably practicable.

[African boxthorn](#)
Lycium ferocissimum

Mandatory Measure
Must not be imported into the State or sold

[African boxthorn](#)
Lycium ferocissimum

Regional Recommended Measure
Land managers should mitigate the risk of new weeds being introduced to their land. Land managers should mitigate spread from their land.

[African olive](#)
Olea europaea subsp. *cuspidata*

Regional Recommended Measure
Land managers should mitigate the risk of new weeds being introduced to their land. Land managers should mitigate spread from their land. The plant should not be bought, sold, grown, carried or released into the environment.

[Aleman grass](#)
Echinochloa polystachya

Regional Recommended Measure
Land managers should mitigate the risk of new weeds being introduced to their land. The plant should be eradicated from the land and the land kept free of the plant. The plant should not be bought, sold, grown, carried or released into the environment. Notify local control authority if found.

[Alligator weed](#)
Alternanthera philoxeroides

Mandatory Measure
Must not be imported into the State or sold

Alligator weed

Alternanthera philoxeroides

Biosecurity Zone

The Alligator Weed Biosecurity Zone is established for all land within the state except land in the following regions: Greater Sydney; Hunter (but only in the local government areas of City of Lake Macquarie, City of Maitland, City of Newcastle or Port Stephens).

Within the Biosecurity Zone this weed must be eradicated where practicable, or as much of the weed destroyed as practicable, and any remaining weed suppressed. The local control authority must be notified of any new infestations of this weed within the Biosecurity Zone

Alligator weed

Alternanthera philoxeroides

Regional Recommended Measure

Land managers should mitigate the risk of new weeds being introduced to their land.

Anchored water hyacinth

Eichhornia azurea

Prohibited Matter

A person who deals with prohibited matter or a carrier of prohibited matter is guilty of an offence. A person who becomes aware of or suspects the presence of prohibited matter must immediately notify the Department of Primary Industries

Arrowhead

Sagittaria calycina var. *calycina*

Regional Recommended Measure

Land managers should mitigate the risk of new weeds being introduced to their land. The plant should be eradicated from the land and the land kept free of the plant. The plant should not be bought, sold, grown, carried or released into the environment. Notify local control authority if found.

Athel pine

Mandatory Measure

Tamarix aphylla

Must not be imported into the State or sold

Bellyache bush

Jatropha gossypifolia

Mandatory Measure

Must not be imported into the State or sold

Bellyache bush

Jatropha gossypifolia

Regional Recommended Measure

Land managers should mitigate the risk of new weeds being introduced to their land. The plant should be eradicated from the land and the land kept free of the plant. The plant should not be bought, sold, grown, carried or released into the environment. Notify local control authority if found.

Bitou bush

Chrysanthemoides monilifera subsp. *rotundata*

Mandatory Measure

Must not be imported into the State or sold

Bitou bush

Chrysanthemoides monilifera subsp. *rotundata*

Biosecurity Zone

The Bitou Bush Biosecurity Zone is established for all land within the State except land within 10 kilometres of the mean high water mark of the Pacific Ocean between Cape Byron in the north and Point Perpendicular in the south.

Within the Biosecurity Zone this weed must be eradicated where practicable, or as much of the weed destroyed as practicable, and any remaining weed suppressed. The local control authority must be notified of any new infestations of this weed within the Biosecurity Zone

Black knapweed

Centaurea X moncktonii

Prohibited Matter

A person who deals with prohibited matter or a carrier of prohibited matter is guilty of an offence. A person who becomes aware

of or suspects the presence of prohibited matter must immediately notify the Department of Primary Industries

Black willow
Salix nigra

Mandatory Measure

Must not be imported into the State or sold

Black willow
Salix nigra

Regional Recommended Measure

Land managers should mitigate the risk of new weeds being introduced to their land. Land managers should mitigate spread from their land.

Blackberry
Rubus fruticosus species aggregate

Mandatory Measure

Must not be imported into the State or sold

All species in the *Rubus fruticosus* species aggregate have this requirement, except for the varieties Black Satin, Chehalem, Chester Thornless, Dirksen Thornless, Loch Ness, Murrindindi, Silvan, Smooth Stem, and Thornfree

Blackberry
Rubus fruticosus species aggregate

Regional Recommended Measure

An exclusion zone is established for all lands in the region, except the core infestation area comprising the Gwydir Shire council, Liverpool Plains Shire council and Tamworth Regional council
Whole of region: The plant should not be bought, sold, grown, carried or released into the environment. Exclusion zone: Land managers should mitigate the risk of new weeds being introduced to their land; land managers should mitigate spread from their land. Core infestation: Land managers reduce impacts from the plant on priority

assets

[Blue hound's tongue](#)
Cynoglossum creticum

Regional Recommended Measure

Land managers should mitigate the risk of new weeds being introduced to their land. The plant should be eradicated from the land and the land kept free of the plant. The plant should not be bought, sold, grown, carried or released into the environment. Notify local control authority if found.

[Boneseed](#)
Chrysanthemoides monilifera subsp. *monilifera*

Mandatory Measure

Must not be imported into the State or sold

[Boneseed](#)
Chrysanthemoides monilifera subsp. *monilifera*

Control Order

Boneseed Control Zone: Whole of NSW
Boneseed Control Zone (Whole of NSW): Owners and occupiers of land on which there is boneseed must notify the local control authority of new infestations; immediately destroy the plants; ensure subsequent generations are destroyed; and ensure the land is kept free of the plant. A person who deals with a carrier of boneseed must ensure the plant (and any seed and propagules) is not moved from the land; and immediately notify the local control authority of the presence of the plant.

[Boxing glove cactus](#)
Cylindropuntia fulgida var. *mamillata*

Mandatory Measure

Must not be imported into the State or sold

[Bridal creeper](#)

Mandatory Measure

Must not be imported into the State or sold
***this requirement also applies to the**

Asparagus asparagoides

Western Cape form of bridal creeper

Bridal veil creeper

Asparagus declinatus

Prohibited Matter

A person who deals with prohibited matter or a carrier of prohibited matter is guilty of an offence. A person who becomes aware of or suspects the presence of prohibited matter must immediately notify the Department of Primary Industries

Broomrapes

Orobanche species

Prohibited Matter

A person who deals with prohibited matter or a carrier of prohibited matter is guilty of an offence. A person who becomes aware of or suspects the presence of prohibited matter must immediately notify the Department of Primary Industries

All species of *Orobanche* are Prohibited Matter in NSW, except the natives *Orobanche cernua* var. *australiana* and *Orobanche minor*

Brown-top bent

Agrostis capillaris

Regional Recommended Measure

Land managers should mitigate the risk of new weeds being introduced to their land. The plant should be eradicated from the land and the land kept free of the plant. The plant should not be bought, sold, grown, carried or released into the environment. Notify local control authority if found.

Cabomba

Cabomba caroliniana

Mandatory Measure

Must not be imported into the State or sold

Cabomba

Regional Recommended Measure

Cabomba caroliniana

Land managers should mitigate the risk of new weeds being introduced to their land. The plant should be eradicated from the land and the land kept free of the plant. The plant should not be bought, sold, grown, carried or released into the environment. Notify local control authority if found.

This applies to all species of *Cabomba* except for the native *Cabomba furcata*

[Camel thorn](#)

Alhagi maurorum

Regional Recommended Measure

Land managers should mitigate the risk of new weeds being introduced to their land. The plant should be eradicated from the land and the land kept free of the plant. The plant should not be bought, sold, grown, carried or released into the environment. Notify local control authority if found.

[Cane cactus](#)

Austrocylindropuntia cylindrica

Mandatory Measure

Must not be imported into the State or sold

All species in the *Austrocylindropuntia* genus have this requirement

[Cape broom](#)

Genista monspessulana

Mandatory Measure

Must not be imported into the State or sold

[Cape broom](#)

Genista monspessulana

Regional Recommended Measure

An exclusion zone is established for all lands in the region, except the core infestation area comprising all Local Government Areas east of the Newell Highway

Whole of region: The plant should not be bought, sold, grown, carried or released into the environment. Exclusion zone: Land managers should mitigate the risk of new

weeds being introduced to their land; land managers should mitigate spread from their land; the plant should be eradicated from the land and the land kept free of the plant. Core infestation: Land managers reduce impacts from the plant on priority assets

Cape tulip - one leaf
Moraea flaccida

Regional Recommended Measure

Land managers should mitigate the risk of new weeds being introduced to their land. The plant should be eradicated from the land and the land kept free of the plant. The plant should not be bought, sold, grown, carried or released into the environment. Notify local control authority if found.

Cape tulip - two-leaf
Moraea miniata

Regional Recommended Measure

Land managers should mitigate the risk of new weeds being introduced to their land. The plant should be eradicated from the land and the land kept free of the plant. The plant should not be bought, sold, grown, carried or released into the environment. Notify local control authority if found.

Cat's claw creeper
Dolichandra unguis-cati

Mandatory Measure

Must not be imported into the State or sold

Chilean needle grass
Nassella neesiana

Mandatory Measure

Must not be imported into the State or sold

Chilean needle grass
Nassella neesiana

Regional Recommended Measure

An exclusion zone is established for all lands in the region, except the core infestation area comprising the Tamworth Regional council

Whole of region: The plant should not be bought, sold, grown, carried or released into the environment. Exclusion zone: Land managers should mitigate the risk of new weeds being introduced to their land; land managers should mitigate spread from their land. Core infestation: Land managers reduce impacts from the plant on priority assets

Chinese violet

Asystasia gangetica subsp. *micrantha*

Regional Recommended Measure

Land managers should mitigate the risk of new weeds being introduced to their land. The plant should be eradicated from the land and the land kept free of the plant. The plant should not be bought, sold, grown, carried or released into the environment. Notify local control authority if found.

Climbing asparagus

Asparagus africanus

Mandatory Measure

Must not be imported into the State or sold

Climbing asparagus fern

Asparagus plumosus

Mandatory Measure

Must not be imported into the State or sold

Common pear

Opuntia stricta

Mandatory Measure

Must not be imported into the State or sold

East Indian hygrophila

Hygrophila polysperma

Regional Recommended Measure

Land managers should mitigate the risk of new weeds being introduced to their land. The plant should be eradicated from the land and the land kept free of the plant. The plant should not be bought, sold, grown, carried or released into the environment.

Notify local control authority if found.

Eurasian water milfoil
Myriophyllum spicatum

Prohibited Matter

A person who deals with prohibited matter or a carrier of prohibited matter is guilty of an offence. A person who becomes aware of or suspects the presence of prohibited matter must immediately notify the Department of Primary Industries

Fireweed
Senecio madagascariensis

Mandatory Measure

Must not be imported into the State or sold

Flax-leaf broom
Genista linifolia

Mandatory Measure

Must not be imported into the State or sold

Frogbit
Limnobium laevigatum

Prohibited Matter

A person who deals with prohibited matter or a carrier of prohibited matter is guilty of an offence. A person who becomes aware of or suspects the presence of prohibited matter must immediately notify the Department of Primary Industries

All species of *Limnobium* are Prohibited Matter

Gamba grass
Andropogon gayanus

Prohibited Matter

A person who deals with prohibited matter or a carrier of prohibited matter is guilty of an offence. A person who becomes aware of or suspects the presence of prohibited matter must immediately notify the Department of Primary Industries

Gorse
Ulex europaeus

Mandatory Measure

Must not be imported into the State or sold

Gorse
Ulex europaeus

Regional Recommended Measure

Land managers should mitigate the risk of new weeds being introduced to their land. The plant should be eradicated from the land and the land kept free of the plant. The plant should not be bought, sold, grown, carried or released into the environment. Notify local control authority if found.

Green cestrum
Cestrum parqui

Regional Recommended Measure

*An exclusion zone is established for all lands in the region, except the core infestation area comprising the Gunnedah Shire council, Gwydir Shire council, Narrabri Shire council and Tamworth Regional council
Whole of region: The plant should not be bought, sold, grown, carried or released into the environment. Exclusion zone: Land managers should mitigate the risk of new weeds being introduced to their land; land managers should mitigate spread from their land; the plant should be eradicated from the land and the land kept free of the plant. Core infestation: Land managers reduce impacts from the plant on priority assets*

Grey sallow
Salix cinerea

Mandatory Measure

Must not be imported into the State or sold

Ground asparagus
Asparagus aethiopicus

Mandatory Measure

Must not be imported into the State or sold

Harrisia cactus
Harrisia species

Regional Recommended Measure

An exclusion zone is established for all lands in the region, except the core infestation area, comprising the Gwydir Shire council and Moree Plains Shire council

Whole of region: The plant should not be bought, sold, grown, carried or released into the environment. Exclusion zone: Land managers should mitigate the risk of new weeds being introduced to their land; the plant should be eradicated from the land and the land kept free of the plant. Core infestation: Land managers reduce impacts from the plant on priority assets

This Regional Recommended Measure applies to *Harrisia martinii* and *Harrisia tortuosa*

Hawkweeds
Hieracium species

Prohibited Matter

A person who deals with prohibited matter or a carrier of prohibited matter is guilty of an offence. A person who becomes aware of or suspects the presence of prohibited matter must immediately notify the Department of Primary Industries

All species in the genus *Hieracium* are Prohibited Matter

Honey locust
Gleditsia triacanthos

Regional Recommended Measure

An exclusion zone is established for all lands in the region, except the core infestation area comprising the Gunnedah Shire council; Narrabri Shire council and Tamworth Regional council

Whole of region: The plant should not be bought, sold, grown, carried or released into the environment. Exclusion zone: Land managers should mitigate the risk of new weeds being introduced to their land; the plant should be eradicated from the land and the land kept free of the plant. Core infestation: Land managers reduce impacts

from the plant on priority assets

Horsetails

Equisetum species

Regional Recommended Measure

Land managers should mitigate the risk of new weeds being introduced to their land. The plant should be eradicated from the land and the land kept free of the plant. The plant should not be bought, sold, grown, carried or released into the environment. Notify local control authority if found.

Hudson pear

Cylindropuntia rosea

Mandatory Measure

Must not be imported into the State or sold

Hudson pear

Cylindropuntia rosea

Regional Recommended Measure

*Whole of Region, excluding Core infestations within Walgett shire
Within Exclusion Zone: Land managers should mitigate the risk of new weeds being introduced to their land. The plant should be eradicated from the land and the land kept free of the plant. Within Core infestation: should be contained and reduced in extent and outlier infestations should be continuously suppressed and destroyed.*

Hydrocotyl

Hydrocotyle ranunculoides

Prohibited Matter

A person who deals with prohibited matter or a carrier of prohibited matter is guilty of an offence. A person who becomes aware of or suspects the presence of prohibited matter must immediately notify the Department of Primary Industries

Hygrophila

Regional Recommended Measure

Hygrophila costata

Land managers should mitigate the risk of new weeds being introduced to their land. The plant should be eradicated from the land and the land kept free of the plant. The plant should not be bought, sold, grown, carried or released into the environment. Notify local control authority if found.

Hymenachne

Hymenachne amplexicaulis and hybrids

Mandatory Measure

Must not be imported into the State or sold

Karoo thorn

Vachellia karroo

Prohibited Matter

A person who deals with prohibited matter or a carrier of prohibited matter is guilty of an offence. A person who becomes aware of or suspects the presence of prohibited matter must immediately notify the Department of Primary Industries

Kidney-leaf mud plantain

Heteranthera reniformis

Regional Recommended Measure

Land managers should mitigate the risk of new weeds being introduced to their land. The plant should be eradicated from the land and the land kept free of the plant. The plant should not be bought, sold, grown, carried or released into the environment. Notify local control authority if found.

Kochia

Bassia scoparia

Prohibited Matter

A person who deals with prohibited matter or a carrier of prohibited matter is guilty of an offence. A person who becomes aware of or suspects the presence of prohibited matter must immediately notify the Department of Primary Industries
Excluding the subspecies *trichophylla*

Koster's curse
Clidemia hirta

Prohibited Matter

A person who deals with prohibited matter or a carrier of prohibited matter is guilty of an offence. A person who becomes aware of or suspects the presence of prohibited matter must immediately notify the Department of Primary Industries

Lagarosiphon
Lagarosiphon major

Prohibited Matter

A person who deals with prohibited matter or a carrier of prohibited matter is guilty of an offence. A person who becomes aware of or suspects the presence of prohibited matter must immediately notify the Department of Primary Industries

Lantana
Lantana camara

Mandatory Measure

Must not be imported into the State or sold

Leafy elodea
Egeria densa

Regional Recommended Measure

Land managers should mitigate the risk of new weeds being introduced to their land. The plant should be eradicated from the land and the land kept free of the plant. The plant should not be bought, sold, grown, carried or released into the environment. Notify local control authority if found.

Long-leaf willow primrose
Ludwigia longifolia

Regional Recommended Measure

Land managers should mitigate the risk of new weeds being introduced to their land. The plant should be eradicated from the land and the land kept free of the plant. The plant should not be bought, sold, grown, carried or released into the environment. Notify local control authority if found.

Ludwigia

Ludwigia peruviana

Regional Recommended Measure

Land managers should mitigate the risk of new weeds being introduced to their land. The plant should be eradicated from the land and the land kept free of the plant. The plant should not be bought, sold, grown, carried or released into the environment. Notify local control authority if found.

Madeira vine

Anredera cordifolia

Mandatory Measure

Must not be imported into the State or sold

Madeira vine

Anredera cordifolia

Regional Recommended Measure

Land managers should mitigate the risk of new weeds being introduced to their land.

Mesquite

Prosopis species

Mandatory Measure

Must not be imported into the State or sold
All species in the genus *Prosopis* have this requirement

Mesquite

Prosopis species

Regional Recommended Measure

An exclusion zone is established for all lands in the region, except the core infestation area comprising the Walgett Shire council
Whole of region: The plant should not be bought, sold, grown, carried or released into the environment. Exclusion zone: Land managers should mitigate the risk of new weeds being introduced to their land; the plant should be eradicated from the land and the land kept free of the plant. Core infestation: Land managers reduce impacts from the plant on priority assets

[Mexican feather grass](#)
Nassella tenuissima

Prohibited Matter

A person who deals with prohibited matter or a carrier of prohibited matter is guilty of an offence. A person who becomes aware of or suspects the presence of prohibited matter must immediately notify the Department of Primary Industries

[Miconia](#)
Miconia species

Prohibited Matter

A person who deals with prohibited matter or a carrier of prohibited matter is guilty of an offence. A person who becomes aware of or suspects the presence of prohibited matter must immediately notify the Department of Primary Industries
All species of *Miconia* are Prohibited Matter in NSW

[Mikania vine](#)
Mikania micrantha

Prohibited Matter

A person who deals with prohibited matter or a carrier of prohibited matter is guilty of an offence. A person who becomes aware of or suspects the presence of prohibited matter must immediately notify the Department of Primary Industries
***all species in the genus *Mikania* are Prohibited Matter in NSW**

[Mimosa](#)
Mimosa pigra

Prohibited Matter

A person who deals with prohibited matter or a carrier of prohibited matter is guilty of an offence. A person who becomes aware of or suspects the presence of prohibited matter must immediately notify the Department of Primary Industries

[Mother-of-millions](#)

Regional Recommended Measure

Land managers should mitigate the risk of

Bryophyllum species

new weeds being introduced to their land. Land managers should mitigate spread from their land. The plant should not be bought, sold, grown, carried or released into the environment.

This Regional Recommended Measure applies to *Bryophyllum delagoense*

Parkinsonia

Parkinsonia aculeata

Mandatory Measure

Must not be imported into the State or sold

Parkinsonia

Parkinsonia aculeata

Control Order

*Parkinsonia Control Zone: Whole of NSW
Parkinsonia Control Zone (Whole of NSW): Owners and occupiers of land on which there is parkinsonia must notify the local control authority of new infestations; immediately destroy the plants; ensure subsequent generations are destroyed; and ensure the land is kept free of the plant. A person who deals with a carrier of parkinsonia must ensure the plant (and any seed and propagules) is not moved from the land; and immediately notify the local control authority of the presence of the plant.*

Parthenium weed

Parthenium hysterophorus

Prohibited Matter

A person who deals with prohibited matter or a carrier of prohibited matter is guilty of an offence. A person who becomes aware of or suspects the presence of prohibited matter must immediately notify the Department of Primary Industries

Parthenium weed

Parthenium hysterophorus

Mandatory Measure

The following equipment must not be imported into NSW from Queensland: grain harvesters (including the comb or front),

comb trailers (including the comb or front), bins used for holding grain during harvest operations, augers or similar for moving grain, vehicles used to transport grain harvesters, support vehicles driven in paddocks during harvest operations, mineral exploration drilling rigs and vehicles used to transport those rigs, unless set out as an exception in Division 5, Part 2 of the Biosecurity Order (Permitted Activities) 2017

Pond apple
Annona glabra

Prohibited Matter

A person who deals with prohibited matter or a carrier of prohibited matter is guilty of an offence. A person who becomes aware of or suspects the presence of prohibited matter must immediately notify the Department of Primary Industries

Prickly acacia
Vachellia nilotica

Prohibited Matter

A person who deals with prohibited matter or a carrier of prohibited matter is guilty of an offence. A person who becomes aware of or suspects the presence of prohibited matter must immediately notify the Department of Primary Industries

Prickly pears - Austrocyllindropuntias
Austrocyllindropuntia species

Mandatory Measure

Must not be imported into the State or sold
All species in the *Austrocyllindropuntia* genus have this requirement

Prickly pears - Cyllindropuntias
Cyllindropuntia species

Mandatory Measure

Must not be imported into the State or sold
All species in the *Cyllindropuntia* genus

have this requirement

Prickly pears - Opuntias
Opuntia species

Mandatory Measure

Must not be imported into the State or sold
Except for *Opuntia ficus-indica* (Indian fig)

Rhus tree
Toxicodendron succedaneum

Regional Recommended Measure

Land managers should mitigate the risk of new weeds being introduced to their land. The plant should be eradicated from the land and the land kept free of the plant. The plant should not be bought, sold, grown, carried or released into the environment. Notify local control authority if found.

Rope pear
Cylindropuntia imbricata

Mandatory Measure

Must not be imported into the State or sold
All species in the *Cylindropuntia* genus have this requirement

Rope pear
Cylindropuntia imbricata

Regional Recommended Measure

Land managers should mitigate the risk of new weeds being introduced to their land. Land managers should mitigate spread from their land.

Rubber vine
Cryptostegia grandiflora

Prohibited Matter

A person who deals with prohibited matter or a carrier of prohibited matter is guilty of an offence. A person who becomes aware of or suspects the presence of prohibited matter must immediately notify the Department of Primary Industries

Sagittaria

Sagittaria platyphylla

Mandatory Measure

Must not be imported into the State or sold

Sagittaria

Sagittaria platyphylla

Regional Recommended Measure

Land managers should mitigate the risk of new weeds being introduced to their land. The plant should be eradicated from the land and the land kept free of the plant.

Salvinia

Salvinia molesta

Mandatory Measure

Must not be imported into the State or sold

Salvinia

Salvinia molesta

Regional Recommended Measure

Land managers should mitigate the risk of new weeds being introduced to their land. The plant should be eradicated from the land and the land kept free of the plant.

Scotch broom

Cytisus scoparius subsp. *scoparius*

Mandatory Measure

Must not be imported into the State or sold

Scotch broom

Cytisus scoparius subsp. *scoparius*

Regional Recommended Measure

An exclusion zone is established for all lands in the region, except the core infestation area comprising all Local Government Areas east of the Newell Highway

Whole of region: The plant should not be bought, sold, grown, carried or released into the environment. Exclusion zone: Land managers should mitigate the risk of new weeds being introduced to their land; land managers should mitigate spread from their land; the plant should be eradicated from the land and the land kept free of the plant.

Core infestation: Land managers reduce impacts from the plant on priority assets

Senegal tea plant

Gymnocoronis spilanthoides

Regional Recommended Measure

Land managers should mitigate the risk of new weeds being introduced to their land. The plant should be eradicated from the land and the land kept free of the plant. The plant should not be bought, sold, grown, carried or released into the environment. Notify local control authority if found.

Serrated tussock

Nassella trichotoma

Mandatory Measure

Must not be imported into the State or sold

Serrated tussock

Nassella trichotoma

Regional Recommended Measure

An exclusion zone is established for all lands in the region, except the core infestation area comprising all Local Government Areas east of the Newell Highway
Whole of region: The plant should not be bought, sold, grown, carried or released into the environment. Exclusion zone: Land managers should mitigate the risk of new weeds being introduced to their land; land managers should mitigate spread from their land; the plant should be eradicated from the land and the land kept free of the plant. Core infestation: Land managers reduce impacts from the plant on priority assets

Siam weed

Chromolaena odorata

Prohibited Matter

A person who deals with prohibited matter or a carrier of prohibited matter is guilty of an offence. A person who becomes aware of or suspects the presence of prohibited matter must immediately notify the

[Silverleaf nightshade](#)
Solanum elaeagnifolium

Mandatory Measure

Must not be imported into the State or sold

[Silverleaf nightshade](#)
Solanum elaeagnifolium

Regional Recommended Measure

Land managers should mitigate the risk of new weeds being introduced to their land. Land managers should mitigate spread from their land.

[Smooth tree pear](#)
Opuntia monacantha

Mandatory Measure

Must not be imported into the State or sold

[Snakefeather](#)
Asparagus scandens

Mandatory Measure

Must not be imported into the State or sold

[Spongeplant](#)
Limnobia spongia

Prohibited Matter

A person who deals with prohibited matter or a carrier of prohibited matter is guilty of an offence. A person who becomes aware of or suspects the presence of prohibited matter must immediately notify the Department of Primary Industries
All species of *Limnobia* are Prohibited Matter

[Spotted knapweed](#)
Centaurea stoebe subsp. *micranthos*

Prohibited Matter

A person who deals with prohibited matter or a carrier of prohibited matter is guilty of an offence. A person who becomes aware of or suspects the presence of prohibited matter must immediately notify the

St. John's wort

Hypericum perforatum

Regional Recommended Measure

An exclusion zone is established for all lands in the region, except the core infestation area comprising the Gunnedah Shire council, Gwydir Shire council, Liverpool Plains Shire council and Tamworth Regional council

Whole of region: The plant should not be bought, sold, grown, carried or released into the environment. Exclusion zone: Land managers should mitigate the risk of new weeds being introduced to their land; land managers should mitigate spread from their land. Core infestation: Land managers reduce impacts from the plant on priority assets

Sweet briar

Rosa rubiginosa

Regional Recommended Measure

Land managers should mitigate the risk of new weeds being introduced to their land. Land managers should mitigate spread from their land. The plant should not be bought, sold, grown, carried or released into the environment.

Tiger pear

Opuntia aurantiaca

Mandatory Measure

Must not be imported into the State or sold

Tiger pear

Opuntia aurantiaca

Regional Recommended Measure

Land managers should mitigate the risk of new weeds being introduced to their land. Land managers should mitigate spread from their land.

[Tropical soda apple](#)
Solanum viarum

Control Order

Tropical Soda Apple Control Zone: Whole of NSW

Tropical Soda Apple Control Zone (Whole of NSW): Owners and occupiers of land on which there is tropical soda apple must notify the local control authority of new infestations; destroy the plants including the fruit; ensure subsequent generations are destroyed; and ensure the land is kept free of the plant. A person who deals with a carrier of tropical soda apple must ensure the plant (and any seed and propagules) is not moved from the land; and immediately notify the local control authority of the presence of the plant on the land, or on or in a carrier.

[Velvety tree pear](#)
Opuntia tomentosa

Mandatory Measure

Must not be imported into the State or sold

[Water caltrop](#)
Trapa species

Prohibited Matter

A person who deals with prohibited matter or a carrier of prohibited matter is guilty of an offence. A person who becomes aware of or suspects the presence of prohibited matter must immediately notify the Department of Primary Industries
All species in the *Trapa* genus are Prohibited Matter in NSW

[Water hyacinth](#)
Eichhornia crassipes

Mandatory Measure

Must not be imported into the State or sold

[Water hyacinth](#)
Eichhornia crassipes

Biosecurity Zone

The Water Hyacinth Biosecurity Zone applies to all land within the State, except for the following regions: Greater Sydney or

North Coast, North West (but only the local government area of Moree Plains), Hunter (but only in the local government areas of City of Cessnock, City of Lake Macquarie, MidCoast, City of Maitland, City of Newcastle or Port Stephens), South East (but only in the local government areas of Eurobodalla, Kiama, City of Shellharbour, City of Shoalhaven or City of Wollongong). *Within the Biosecurity Zone this weed must be eradicated where practicable, or as much of the weed destroyed as practicable, and any remaining weed suppressed. The local control authority must be notified of any new infestations of this weed within the Biosecurity Zone*

Water hyacinth
Eichhornia crassipes

Regional Recommended Measure

An exclusion zone is established for all lands in the region, except the core infestation area comprising the Moree Plains Shire council

Whole of region: The plant should not be bought, sold, grown, carried or released into the environment. Exclusion zone: Land managers should mitigate the risk of new weeds being introduced to their land; land managers should mitigate spread from their land; the plant should be eradicated from the land and the land kept free of the plant. Core infestation: Land managers reduce impacts from the plant on priority assets

Water lettuce
Pistia stratiotes

Regional Recommended Measure

Land managers should mitigate the risk of new weeds being introduced to their land. The plant should be eradicated from the land and the land kept free of the plant. Notify local control authority if found.

Water lilies

Regional Recommended Measure

Land managers should mitigate the risk of

Nymphaea species

new weeds being introduced to their land. The plant should be eradicated from the land and the land kept free of the plant. The plant should not be bought, sold, grown, carried or released into the environment. Notify local control authority if found.

This Regional Recommended Measure applies to *Nymphaea mexicana* (Mexican water lily)

Water soldier

Stratiotes aloides

Prohibited Matter

A person who deals with prohibited matter or a carrier of prohibited matter is guilty of an offence. A person who becomes aware of or suspects the presence of prohibited matter must immediately notify the Department of Primary Industries

Willows

Salix species

Mandatory Measure

Must not be imported into the State or sold
All species in the *Salix* genus have this requirement, except *Salix babylonica* (weeping willows), *Salix x calodendron* (pussy willow) and *Salix x reichardtii* (sterile pussy willow)

Witchweeds

Striga species

Prohibited Matter

A person who deals with prohibited matter or a carrier of prohibited matter is guilty of an offence. A person who becomes aware of or suspects the presence of prohibited matter must immediately notify the Department of Primary Industries

All species in the *Striga* genus are Prohibited Matter in NSW, except the native *Striga parviflora*

Yellow bells

Regional Recommended Measure

Land managers should mitigate the risk of

Tecoma stans

new weeds being introduced to their land. The plant should be eradicated from the land and the land kept free of the plant. The plant should not be bought, sold, grown, carried or released into the environment. Notify local control authority if found.

Yellow burrhead
Limnocharis flava

Prohibited Matter

A person who deals with prohibited matter or a carrier of prohibited matter is guilty of an offence. A person who becomes aware of or suspects the presence of prohibited matter must immediately notify the Department of Primary Industries

DRAFT

COUNCIL'S SUMMARY OF ANNUAL OPERATIONS RESULTS AND AUDIT REPORT

Council's Financial Statements for the year ended 30 June, 2017 and Audit Report for the corresponding period are attached.

Council's operations for the year provided:

This section will be updated as per the Independent Auditor's Report once received by Council.

DRAFT

SCHEDULE A – INDEPENDENT AUDITORS REPORT

DRAFT

SCHEDULE B – FINANCIAL STATEMENTS

Please refer to separate attachment.

DRAFT



Castlereagh Macquarie County Council
PO Box 664, Walgett NSW 2832



P. 02 6828 1399
F. 02 6828 1608



www.cmcc.nsw.gov.au

Photos © NSW Department of Primary Industries